

NW COR SEC 8 T2S, R69W
FND 1 1/2" AXLE
W/ ATTACHED 2"
ALUM CAP
LS# 23904

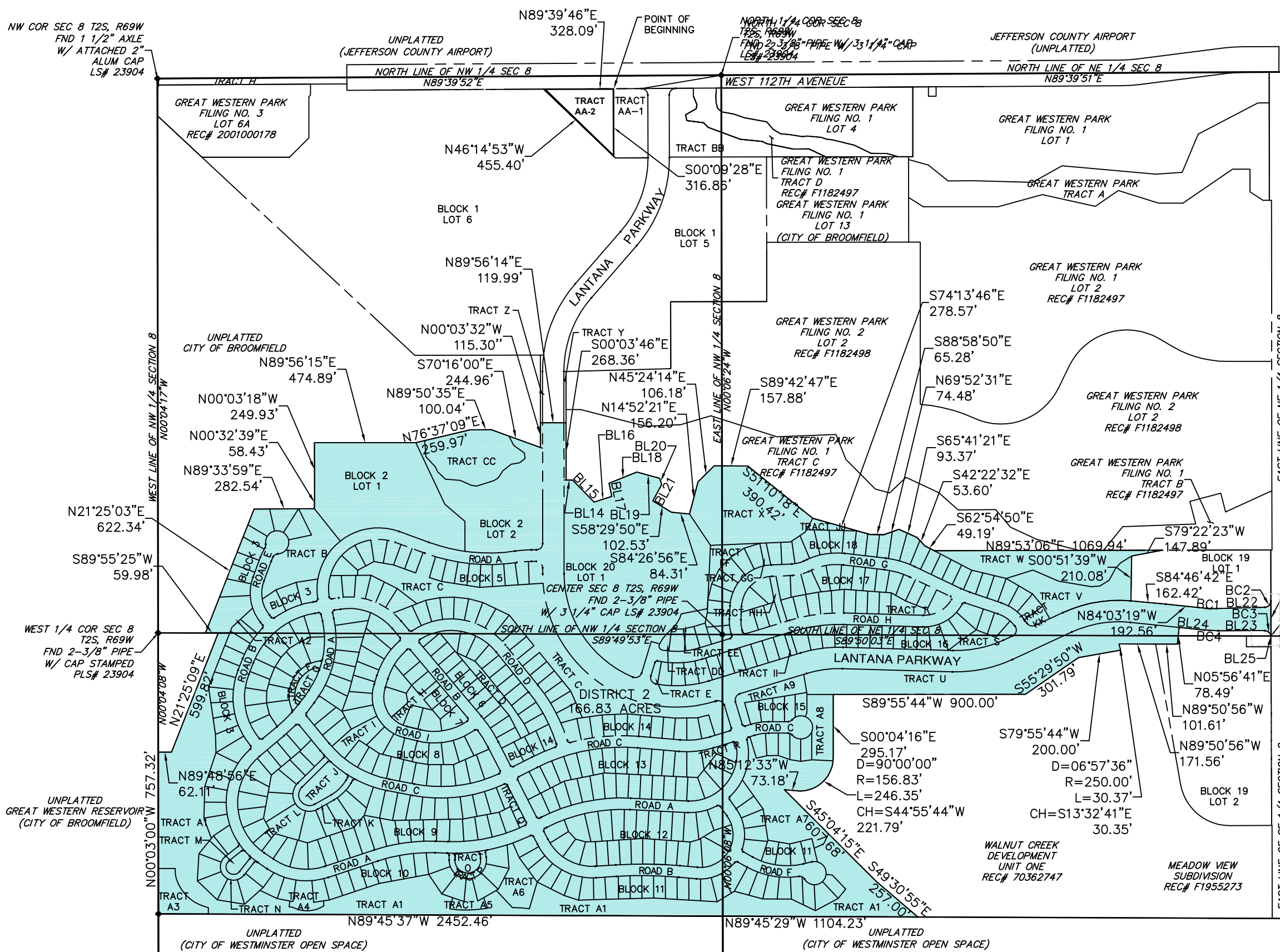
UNPLATTED
(JEFFERSON COUNTY AIRPORT)

NORTH 1/4 COR SEC 8
T2S, R69W
FND 2 3/8" PIPE W/ 3 1/4" CAP
LS# 23904

JEFFERSON COUNTY AIRPORT
(UNPLATTED)

BOUNDARY CURVE TABLE					
NUMBER	DELTA ANGLE	RADIUS	ARC LENGTH	CHORD DIRECTION	CHORD LENGTH
BC1	01°43'12"	523.00	15.70'	S84°54'55"E	15.70'
BC2	88°36'28"	30.00	46.39'	N44°13'31"E	41.91'
BC3	81°21'02"	30.00	42.59'	N49°24'12"W	39.11'
BC4	06°01'24"	625.00	65.70'	N87°04'01"W	65.67'

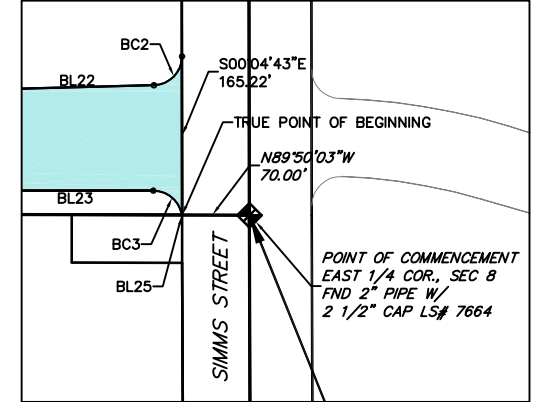
BOUNDARY LINE TABLE		
NUMBER	DIRECTION	LENGTH
BL14	N89°56'14"E	30.17'
BL15	S44°12'48"E	144.51'
BL16	N72°03'46"E	86.99'
BL17	N11°44'08"W	63.05'
BL18	N68°07'25"E	140.67'
BL19	S74°38'57"E	109.99'
BL20	S19°49'07"E	30.95'
BL21	S28°37'11"W	87.08'
BL22	N88°31'45"E	257.78'
BL23	S89°55'17"W	217.73'
BL24	N84°03'19"W	117.60'
BL25	N89°50'03"W	0.34'



NE COR SEC 8
T2S, R69W
FND 2" PIPE
W/ 2-1/2" CAP ILLEGIBLE

CITY OF
WESTMINSTER

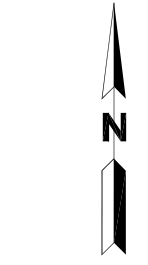
WESTMOOR
TECHNOLOGY
CENTER



DETAIL A
SCALE: 1"=200'

S00°04'43"E
165.22'
POINT OF
BEGINNING
N89°50'03"W
70.00'

EAST 1/4 COR., SEC 8
T2S, R69W
FND 2" PIPE W/
2 1/2" CAP LS# 7664
SEE DETAIL A
THIS SHEET



0 250 500
SCALE 1"=500'

EAST 1/4 COR OF THE SE
QUARTER SEC 8
FND 2 1/2" PIPE W/ 3 1/4"
ALUM CAP
IN RANGE BOX PLS#
UNREADABLE

WEST 1/4 COR SEC 8
T2S, R69W
FND 2-3/8" PIPE
W/ CAP STAMPED
PLS# 23904

UNPLATTED
GREAT WESTERN RESERVOIR
(CITY OF BROOMFIELD)

WALNUT CREEK
DEVELOPMENT
UNIT ONE
REC# 70362747

MEADOW VIEW
SUBDIVISION
REC# F1955273

**GREAT WESTERN PARK - FILING NO. 4
DISTRICT 2 BOUNDARY MAP
EXHIBIT A-1**



12499 WEST COLFAX AVE.
P.O. Box 151500
LAKEWOOD, CO 80215
303.431.6100
FAX 303.431.4028

REV. AUGUST 13, 2012
REV: NOVEMBER 23, 2009
JUNE 30, 2008